



BETHLEHEM PUBLIC LIBRARY

BOARD MEETING
DESIGN UPDATE



ASHLEY MCGRAW

October 10, 2023



AGENDA

Visioning Recap

Design Update

Exterior Design

Communications Plan

Next Steps

VISIONING RECAP



The Whys

- 1. Address outdated and aging components of the Library facility.**
 - a) The last significant update was around 50 years ago.
 - b) There is some presence of asbestos which puts limitations on some maintenance needs.
 - c) The mezzanine level is not suitable for public, or staff needs.

The Whys

2. **Add in-demand space for Library users.**
 - a) Patrons are routinely turned away from the limited meeting and study rooms.
 - b) Meeting space / popular Library programs are limited to 100 people.
 - c) Improve performance space functionality.

The Whys

3. **Add in-demand collections space and improve Library function.**
 - a) Bethlehem Public Library's circulation is the higher in the Upper Hudson Library System.
 - b) Children's area is often crowded and limited in terms of offerings. Teen area is lacking dedicated space.
 - c) Properly address curbside pickup function.
 - d) Improve and expand staff space for better workflow, safety, efficiency, and adequacy.

The Whys

4. **Enhance accessibility of the Library facility & resources.**
 - a) Improve accessibility to and within the facility to the spaces as well as to resources
 - b) Improve parking area safety and add parking spaces
 - c) Reduce distance between parking and entry
 - d) Improve sense of arrival and wayfinding

The Whys

5. **Enhance the Library's environmental sustainability footprint.**
 - a) Increase energy efficiency leading to operational savings
 - b) Update the green space around the Library and preserve the park-like feel
 - c) Modernize site utilities to improve Library as a "good neighbor"



Project Purpose

To position the Bethlehem Public Library as a **community resource** that is accessible to all, offering modern programming in a mindful environment that's nestled within the fabric of the **community**.

Designed in a way that's welcoming, simple to navigate, modern, and adaptable to a variety of programs, both inside the library and throughout the site.

Optimizing the library so that both **patrons and staff** have cohesive environments to suit their evolving needs, and to support the next generation of collaboration, discovery, and learning.

Guiding Principles

Critical to success

Create a **safer** exterior environment that is more **accommodating** to patrons and library activities, has clear vehicle and pedestrian traffic patterns, and a more **prominent entry**.

To be considered the [safe space and resource] for our community members, and a valued **community support partner**.

Create an easily accessible addition that caters to the library and community **program needs** and accommodates multifunctional, **flexible** spaces and **increases patron capacity**.

Providing **adequate space** to ensure that **multiple demographic** needs of patrons are accommodated in functional spaces customized to their intended use and program needs, while **cohesively integrating efficient** employee operational spaces.

DESIGN UPDATE



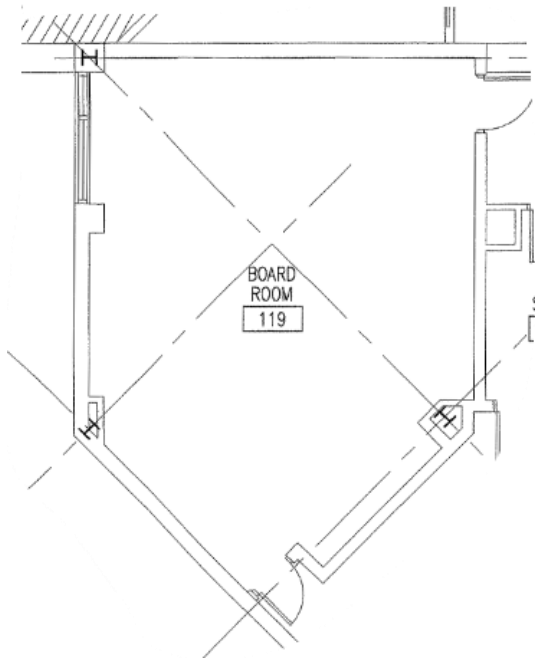


Existing Community Spaces

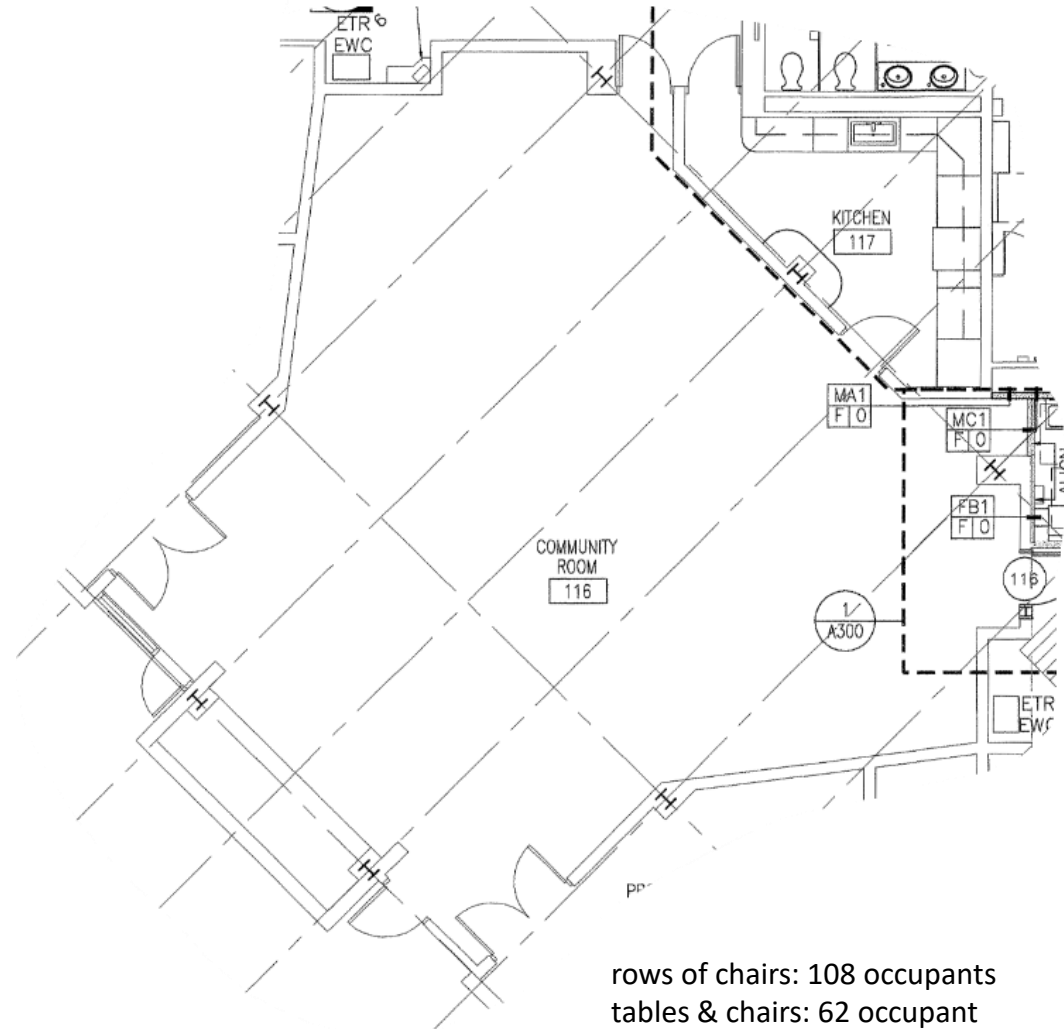
One "large" Community room: 1624sf

One "small" Community room: 562sf

Total: 2186 sf



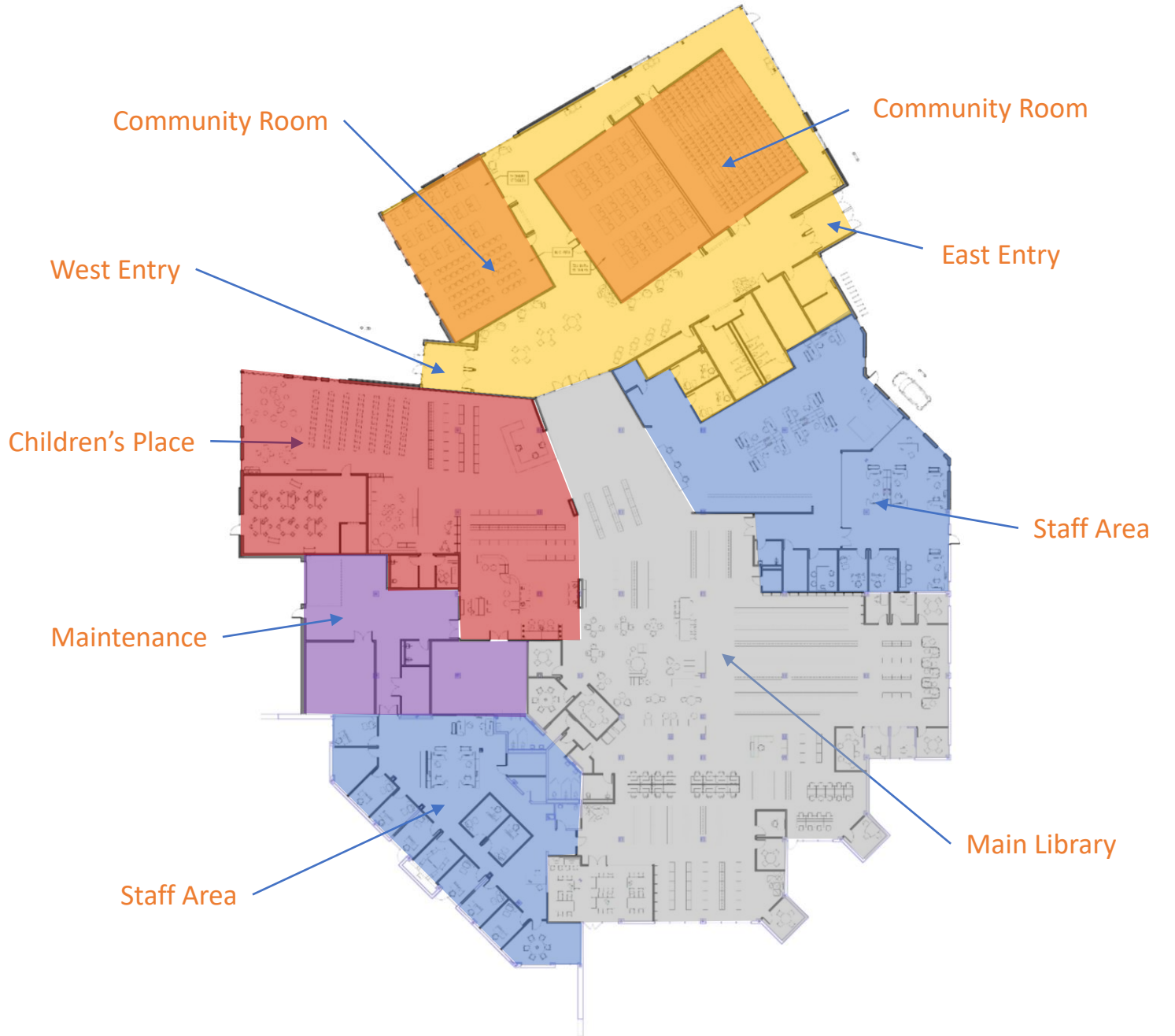
rows of chairs: 37 occupants
tables & chairs: 22 occupants



rows of chairs: 108 occupants
tables & chairs: 62 occupant



Floor Plan





Site Plan

Building Addition

Existing Building



EXTERIOR DESIGN



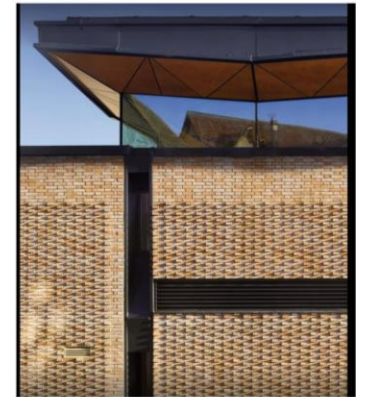


EXISTING CONDITIONS (exterior)



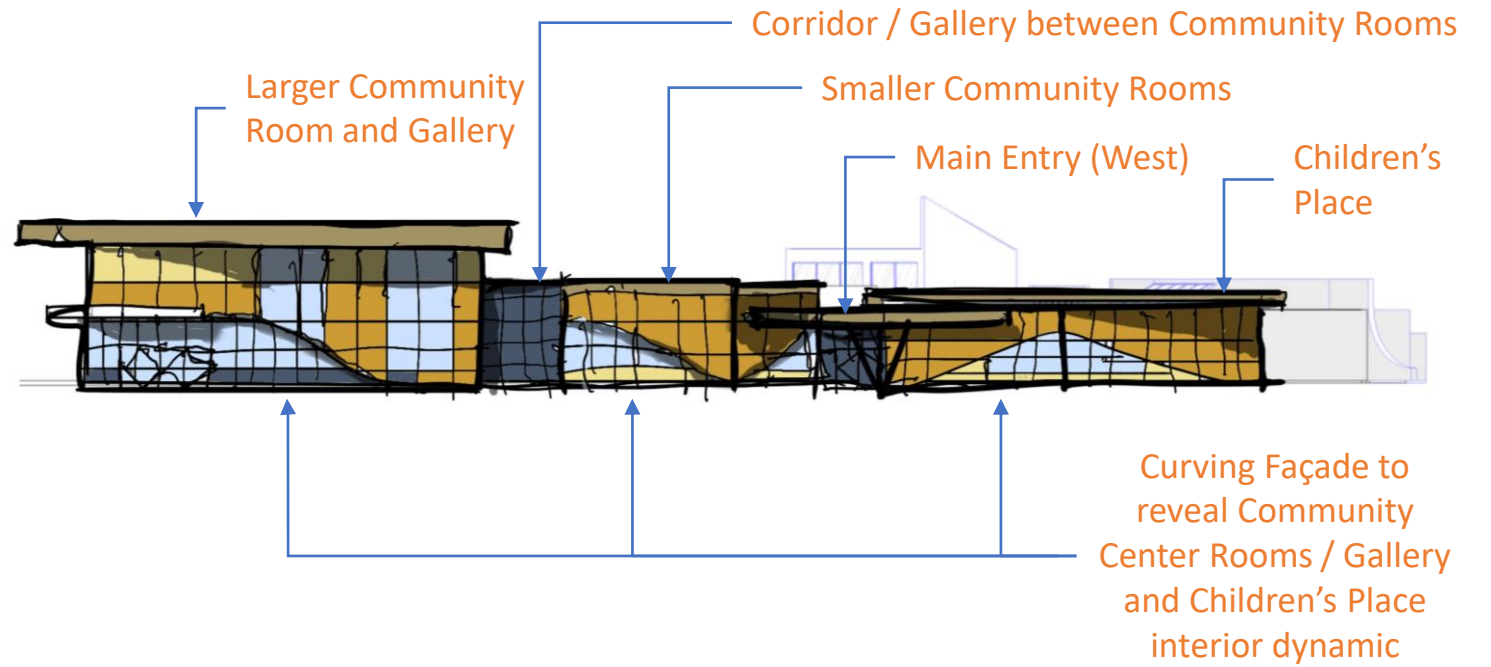


PRECEDENTS



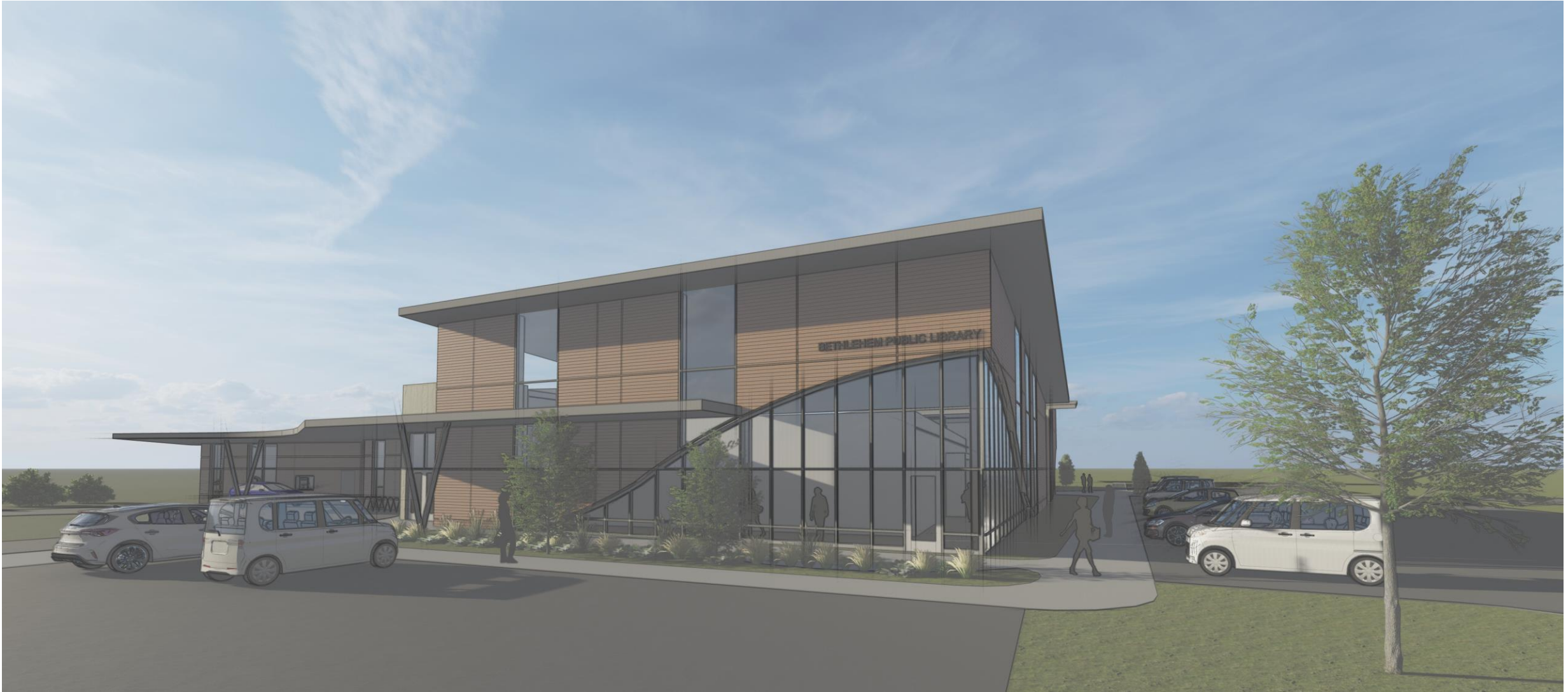


Facade Option A



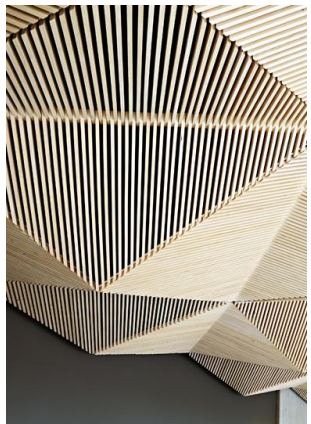
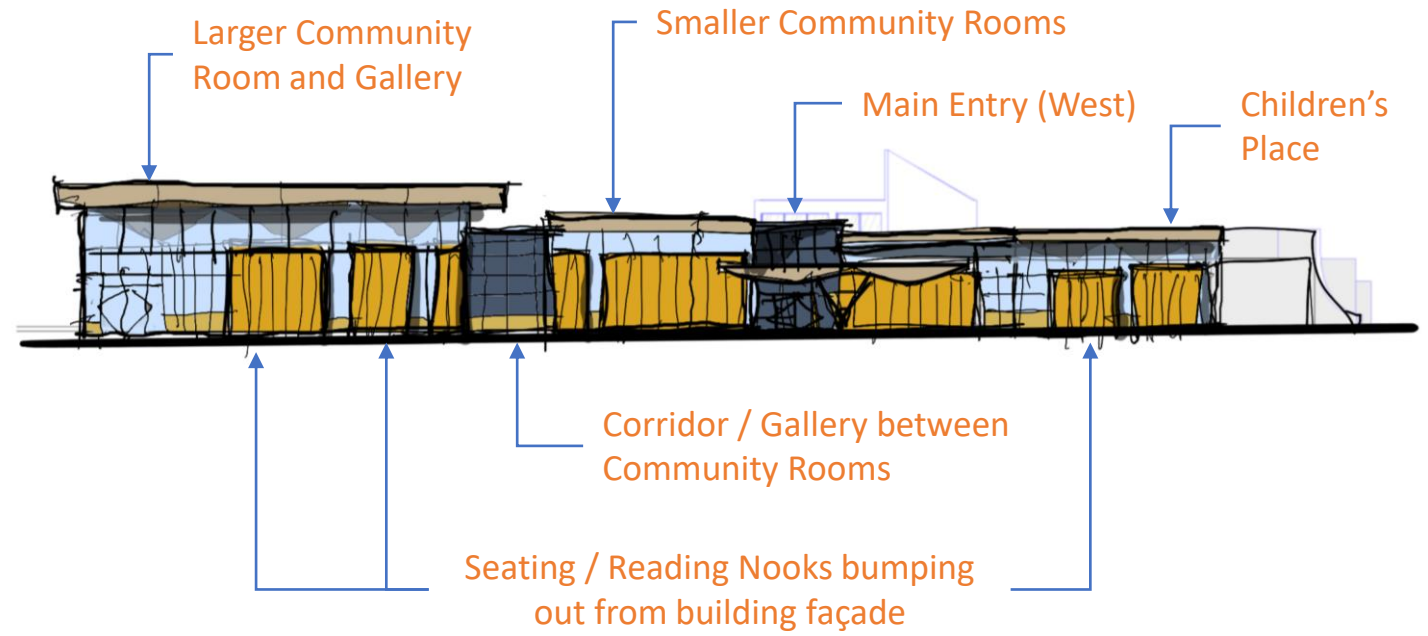


Facade Option A



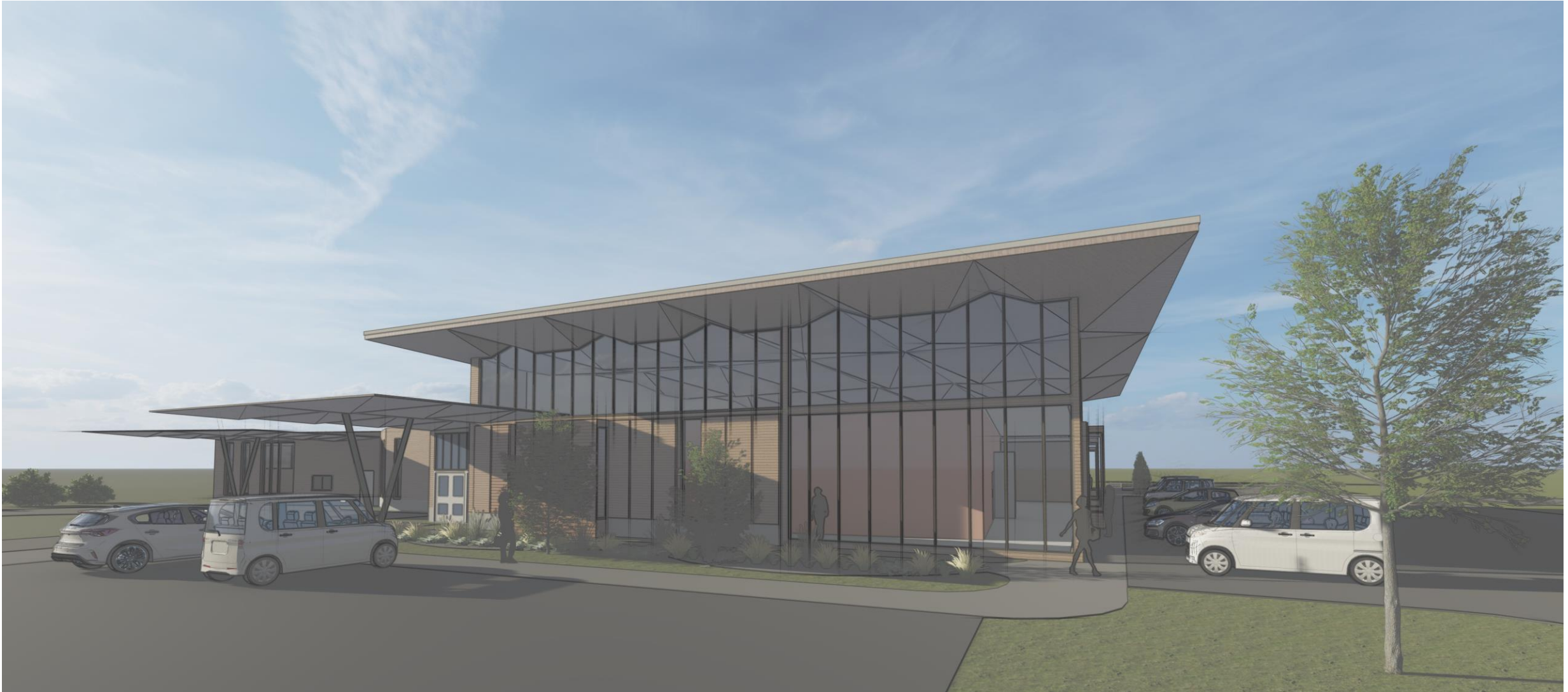


Facade Option B





Facade Option B



COMMUNICATIONS PLAN



Outreach

1. **Displays inside the library**
2. **Website launch**
3. **Newsletters, social media, informational videos**
4. **Community events**

Next Steps

- Cost estimate to determine project cost and Bond need.
- Energy modeling results & review.
- Façade Design Committee Working Session.
- Vote planning.
- Community outreach.
- Schematic Design phase completion mid-November.

