

# BETHLEHEM PUBLIC LIBRARY

COMMUNITY FOCUS GROUP



ASHLEY MCGRAW

July 26th, 2023



The background is a soft-focus photograph of a library. On the left, there are wooden bookshelves filled with books. The right side of the image is dominated by a bokeh effect of warm, yellow and orange lights, suggesting a cozy atmosphere. The text is centered in the middle of the frame.

What is your favorite  
memory involving the  
Bethlehem Public Library?

Work Session  
**GOALS**

Inform

Reflect

Contribute



# Meet the Team



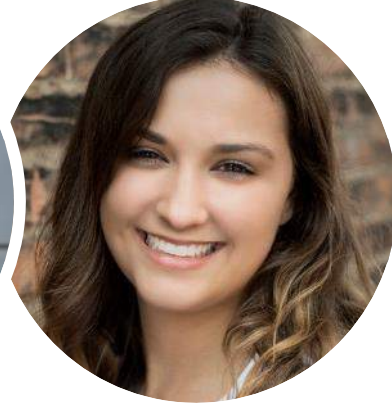
**Susanne Angarano**  
*Principal*



**Elbert Eller**  
*Senior  
Architect*



**Danisley Jayson**  
*Architectural  
Designer*



**Natalie Redmore**  
*Interior Designer*



**Brooke Williams**  
*Interior Architectural  
Designer*



**DeAnna Hine**  
*Professional  
Project Manager*



ASHLEY MCGRAW

# Schedule & Phasing

## 2022 SEP – 2023 FEB

SEP 29 2022

NOV 15 -17 2022

NOV 29 2022

DEC 15 2022

JAN 09 2023

FEB 13 2023

## Feasibility/Planning Study

Board Meeting

Stakeholder Discovery Sessions

Interiors Scope Part II

Board Meeting

Hybrid Concepts Board Presentation

Final Concept Presentation with Renders

## 2023 APR – 2023 SEP

MAY 08

MAY 08

JUN 12

JUL 11

## Schematic Design

Staff Programming Meetings

Board Meeting

Board Meeting

Staff Open House

## 2023 SEP – 2024 JAN

Design Development [appx. 14 weeks]

## 2024 JAN – 2024 APR

Construction Documents [appx. 12 weeks]

## 2024 APR – 2024 JUN/SEP

SED Submission [appx. 8-20 weeks]

2024 DEC

NYS Library Construction Grant Application

TBD

Bidding & Construction Award

# Executive Summary

The Bethlehem Public Library is seeking the opportunity to update the building, streamline operational efficiencies and enhance accommodations to the community which involve providing more space, opportunities and easier access to the building.

The acquisition of 59 Borthwick increases the property footprint and allows for the Library to utilize the space in a variety of ways that achieve the goals of building and community enhancement.

The approach to determine where the priorities lie and what impacts could be made by engaging the Stakeholders along the way to collaborate ensured the design was the foundation of their priorities and goals.

We are continuing to engage through a series of stakeholder interviews with the Library Administration, Library Staff and Library Committee, and Community. The intent of the discussions are to not only talk about specific areas in and around the building, but also identify what the stakeholders want their Library to be in the future, and how it serves the community.

# Project Background

- **Understanding the history and culture of the Library**
- **Researching and analyzing the facility**
- **Developing detailed program space needs.**
- **Defining Scope & Purpose**
- **Visioning through Stakeholder Interviews & Feedback**
- **Determining the Critical Success Factors**

# Discovery

- **Initial Concept Exploration**
- **Stakeholder Voting & Collaboration**
  - Developing Hybrid Concepts
  - Deducing to a Final Hybrid Concept



# Space Planning & Concept Design

- **Developing Interior Program Concept**
- **Comparing Existing vs. Proposed Space Allocation**
- **Determining Component & Feature Precedents**

# Site Logistics

- **Site Development**
- **Mechanical / Electrical / Plumbing / Fire**



PURPOSE



# Project Purpose.

To position the Bethlehem Public Library as a community resource that is accessible to all, offering modern programming in a mindful environment that's nestled within the fabric of the community.

Designed in a way that's welcoming, simple to navigate, modern, and adaptable to a variety of programs, both inside the library and throughout the site.

Optimizing the library so that both patrons and staff have cohesive environments to suit their evolving needs, and to support the next generation of collaboration, discovery, and learning.



# Guiding Principles

What are the critical items that define the success of the project?



# Guiding Principles

Critical to success

Create a **safer** exterior environment that is more **accommodating** to patrons and library activities, has clear vehicle and pedestrian traffic patterns, and a more **prominent entry**.

To be considered the port in a storm for our community members, and a valued **community support partner**.

Create an easily accessible addition that caters to the library and community **program needs** and accommodates multifunctional, **flexible** spaces and increases patron **capacity up to 400**.

Providing **adequate space** to ensure that **multiple demographic** needs of patrons are accommodated in functional spaces customized to their intended use and program needs, while **cohesively integrating efficient** employee operational spaces.




**As we start to think about how we want this library to serve the community and how the definition of a library is currently evolving, we recognize that there is a need to support an array of functions and activities.**

**Throughout each phase of the project, we will consider the purpose of the space in accordance with space adjacencies to develop a comfortable and cohesive environment.**



# KEY ELEMENTS

- Additions for Community Rooms, Children/Teen Library, staff space
  - Eliminate mezzanine – all one level
  - Full interior renovation/reimagining of existing space
  - New site / parking configuration
- 

# PROJECT OVERVIEW & SITE





147 SPACES  
6 ACCESSIBLE SPACES

4 FT. ORNAMENTAL FENCING

PAVILION  
EVENT SPACE

RAISED GROVE

OUTDOOR READING NOOK

4 FT. ORNAMENTAL FENCING

PRESERVED EXISTING VEGETATIVE BUFFER

RELOCATED MAIN ENTRANCE SHED

DUMPSTER AREA

SERVICE ACCESS

BIKE RACKS

FLAGPOLE

DROP OFF / PICK UP LOOP w/ BYPASS

LOOK DROP UNIT

SPEED TABLE

ELEVATED PATIO

ORIENTED





147 SPACES  
6 ACCESSIBLE SPACES

4 FT. ORNAMENTAL FENCING

RAISED GROVE

PAVILION  
EVENT SPACE

4 FT. ORNAMENTAL FENCING

PRESERVED  
EXISTING  
VEGETATIVE  
BUFFER

RELOCATED  
MAINTENANCE  
SHED

DUMPSTER  
AREA

SERVICE  
ACCESS

LOOK DROP  
UNIT  
SPEED  
TABLE

OUTDOOR  
READING  
NOOK

ELEVATED  
PATIO

10 MIN. PARKING

GREEN BIN

BIKE  
RACKS

FLAGPOLE

DROP OFF /  
PICK UP LOOP  
w/ BYPASS



## SITE & EXTERIOR

1

What concerns do you have for traffic patterns, parking, and general navigation of the site?

3

What connection does the library have to its natural surroundings and why does it value green space?

## THOUGHT STARTERS

2

Do you feel the proposed landscape design has enhanced the user experience and connection to the outdoors? How or how not?

4

What three words should describe the feeling of arriving at the library?

## "Dovetail" Concept Narrative

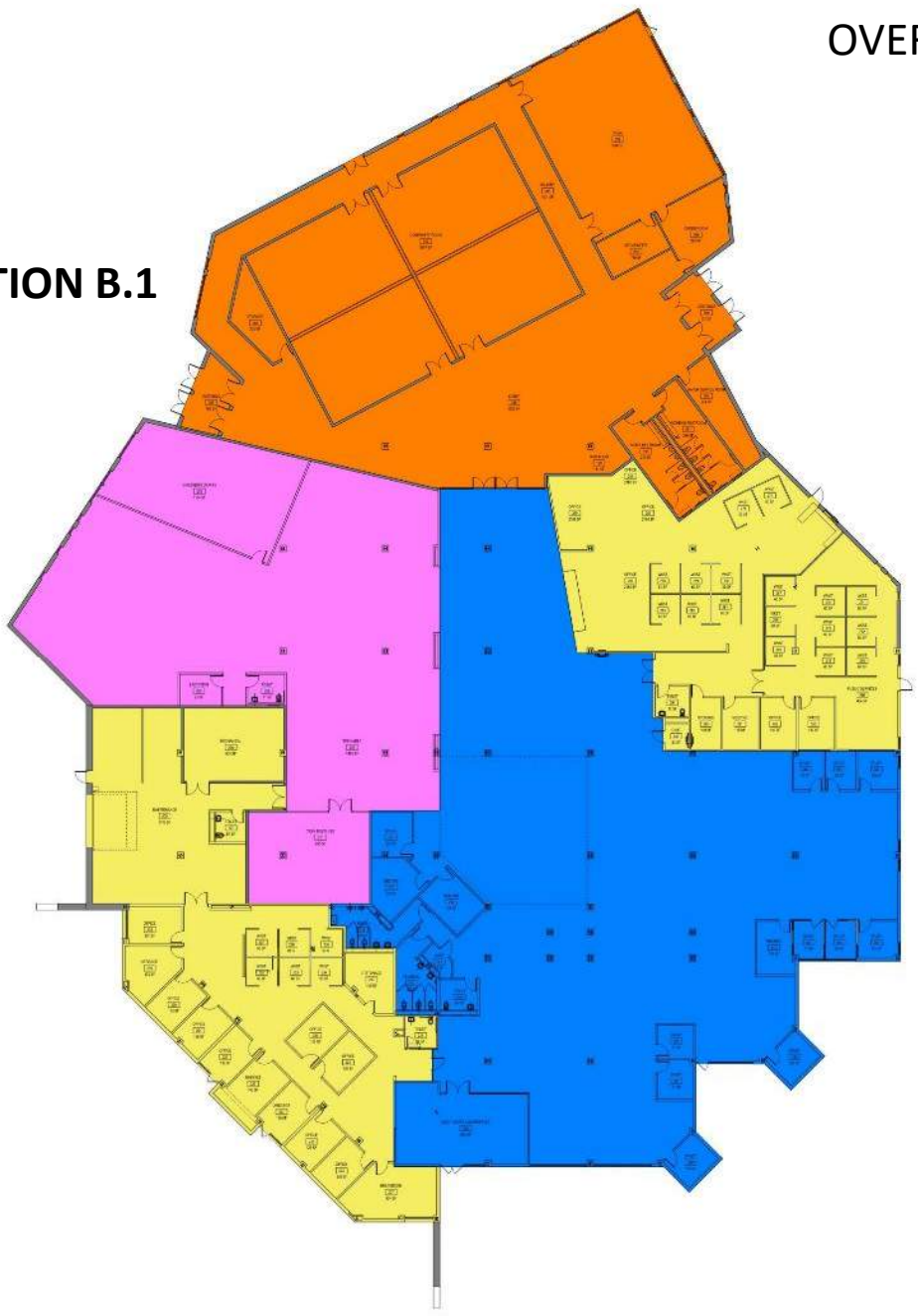
The dovetail concept provides opportunity to patrons of all ages to access the library resources they seek out. It optimizes space needed for program areas while allowing them to interface at key opportunities. Strategic intersections will allow for the primary functions of the library to co-exist.

Stretching and expanding the program areas throughout the interior allows for accessible daylighting to people of all ages. Additionally, the building is surrounded by nature and outdoor resources on all sides.

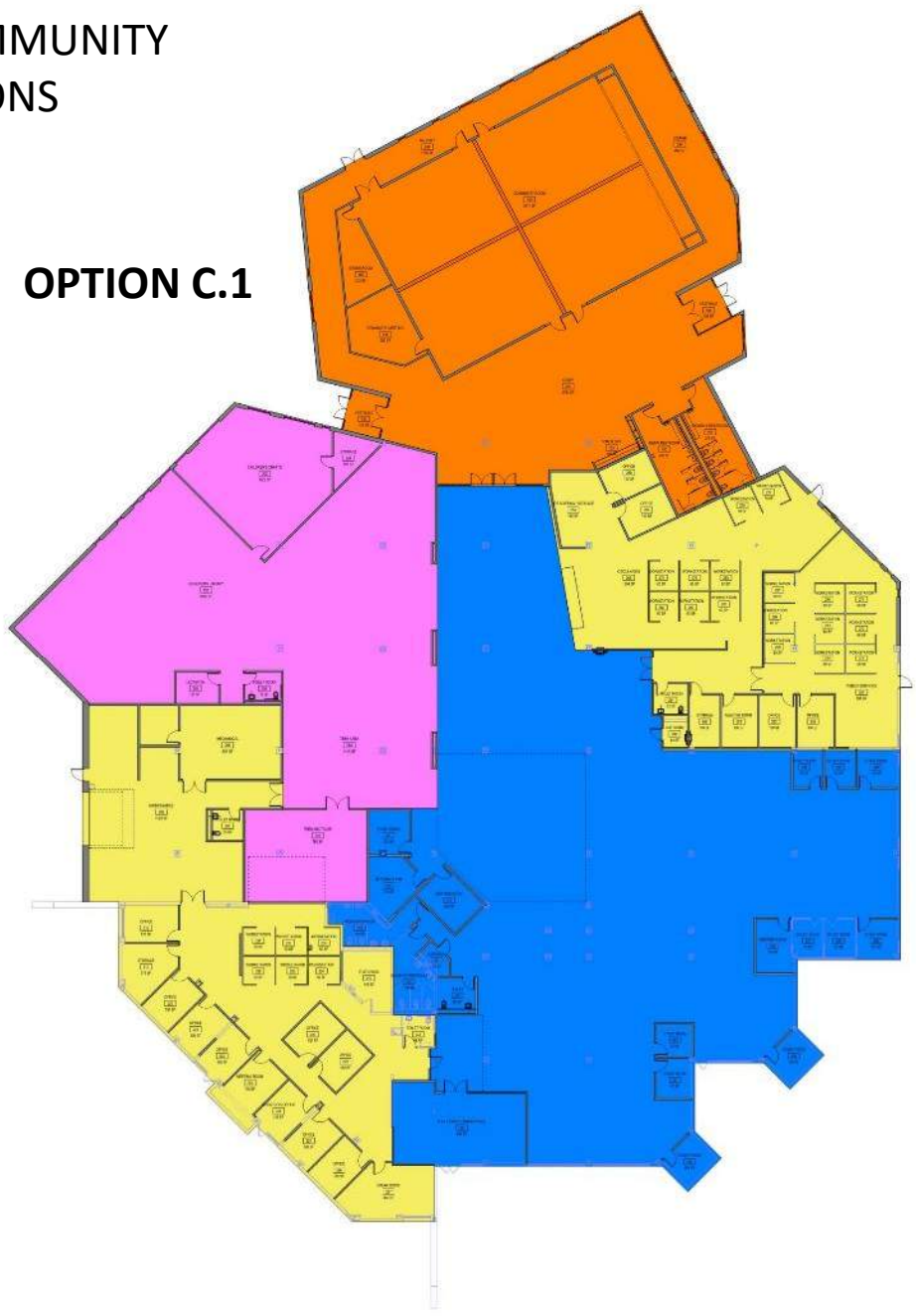


# OVERALL PLAN & COMMUNITY ADDITION OPTIONS

**OPTION B.1**



**OPTION C.1**



# COMMUNITY ADDITION



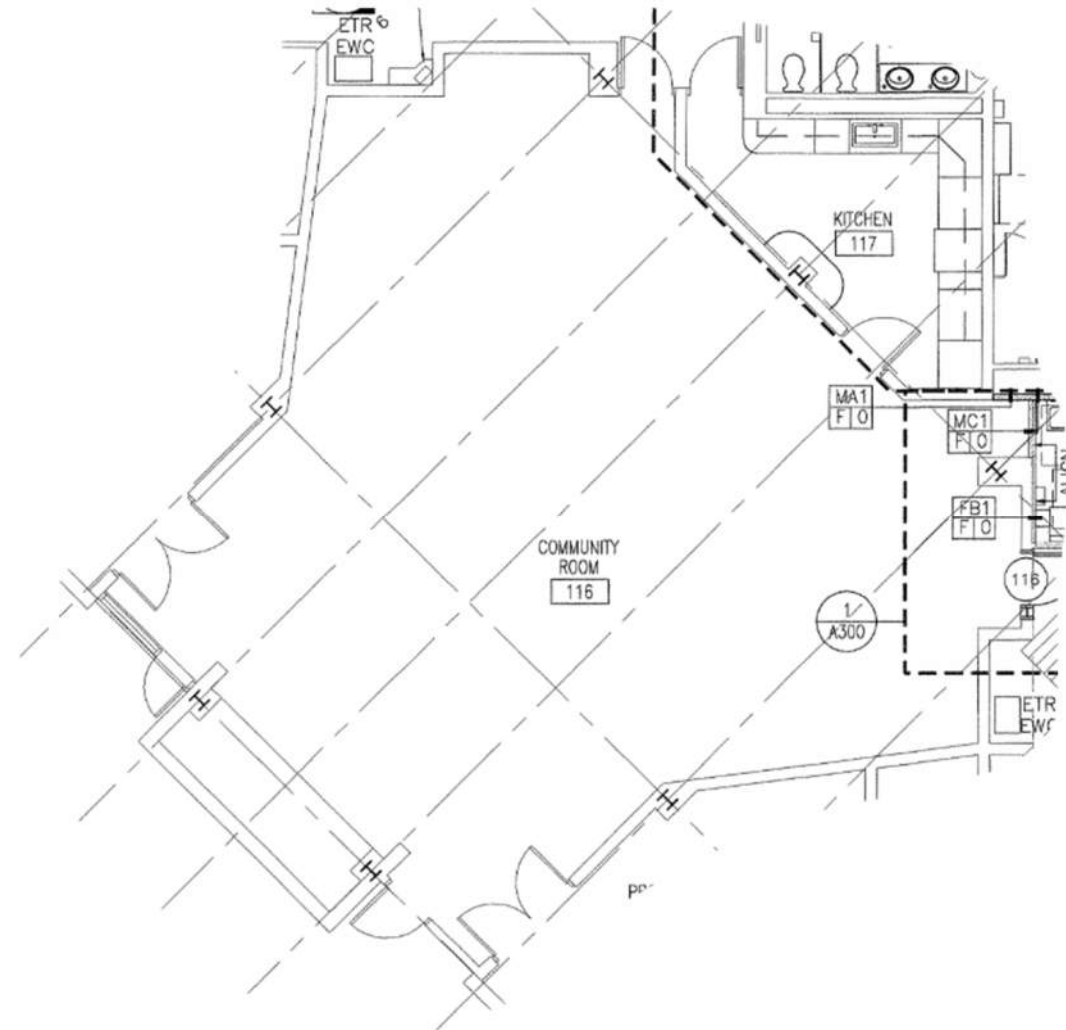
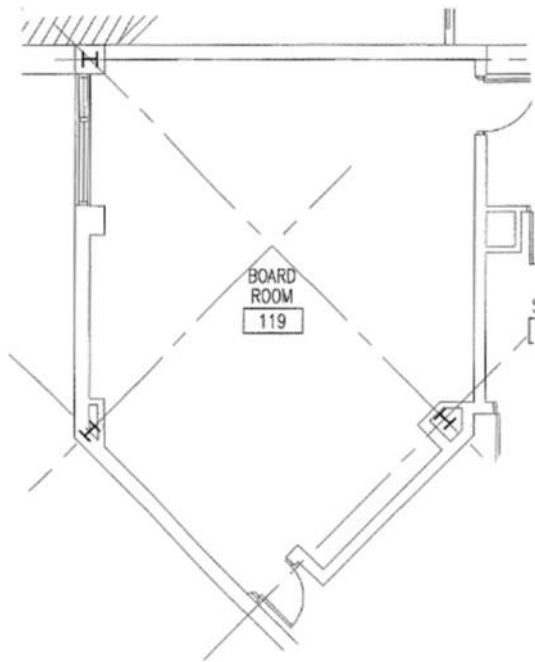




# Existing Community Spaces

One “large” Community room: 1628sf

One “small” Community room: 872sf



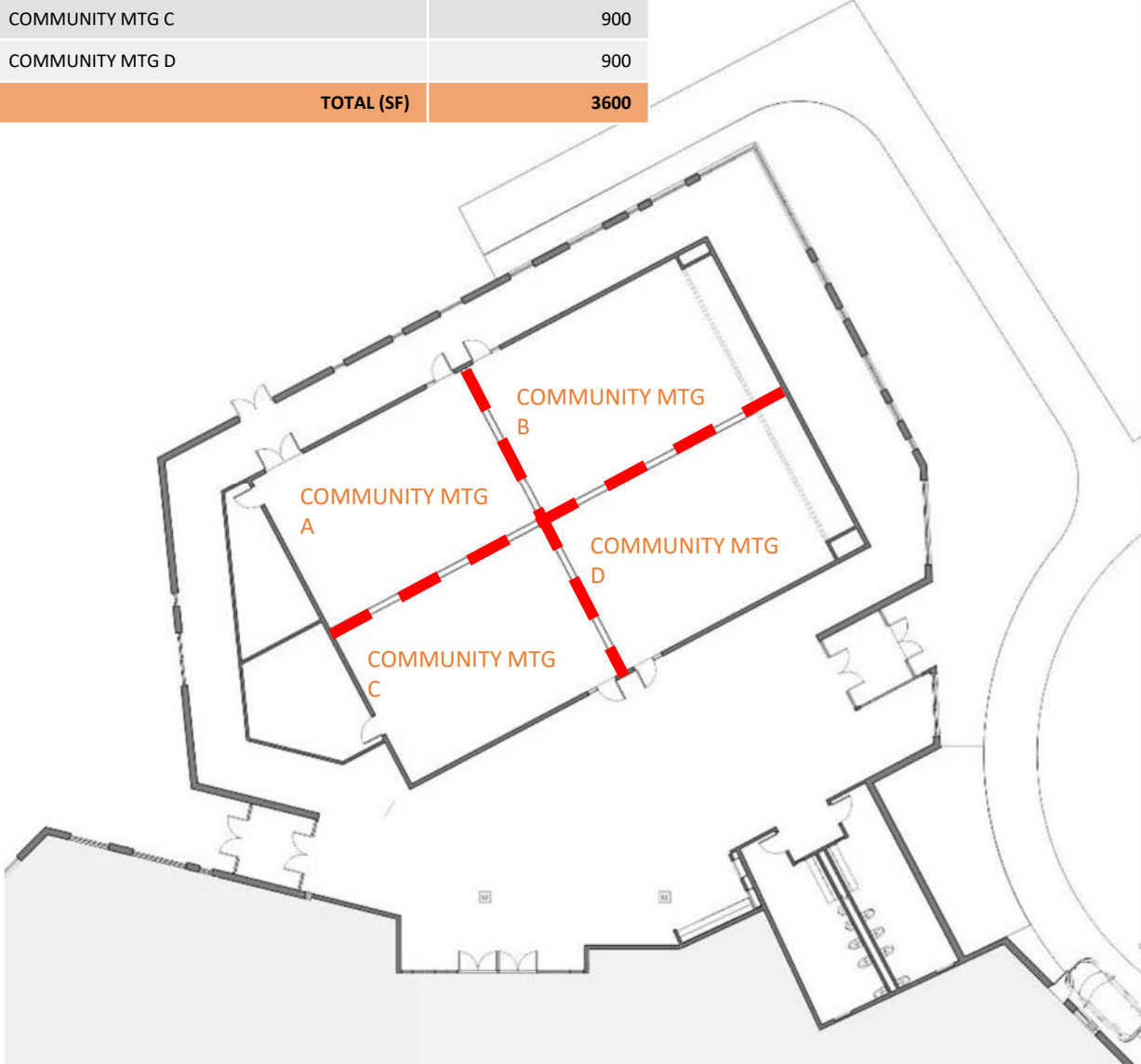
# Community Option B.1

PROGRAM SPACE	SIZE (SF)
COMMUNITY MTG A	900
COMMUNITY MTG B	900
COMMUNITY MTG C	900
COMMUNITY MTG D	900
COMMUNITY MTG E	900
COMMUNITY MTG F	900
<b>TOTAL (SF)</b>	<b>5,400</b>

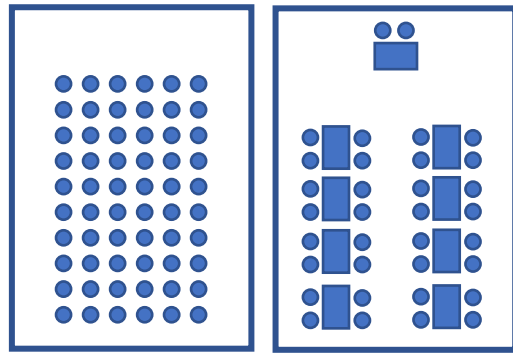


# Community Option C.1

PROGRAM SPACE	SIZE (SF)
COMMUNITY MTG A	900
COMMUNITY MTG B	900
COMMUNITY MTG C	900
COMMUNITY MTG D	900
<b>TOTAL (SF)</b>	<b>3600</b>

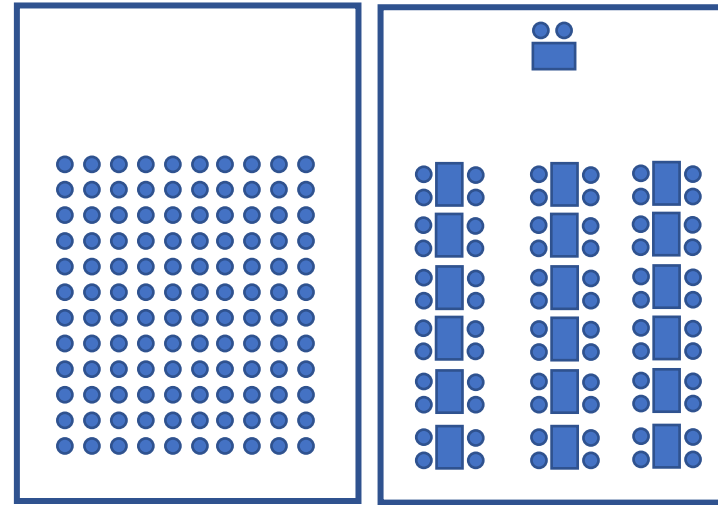


# Community Option C.1 Meeting Room Capacity



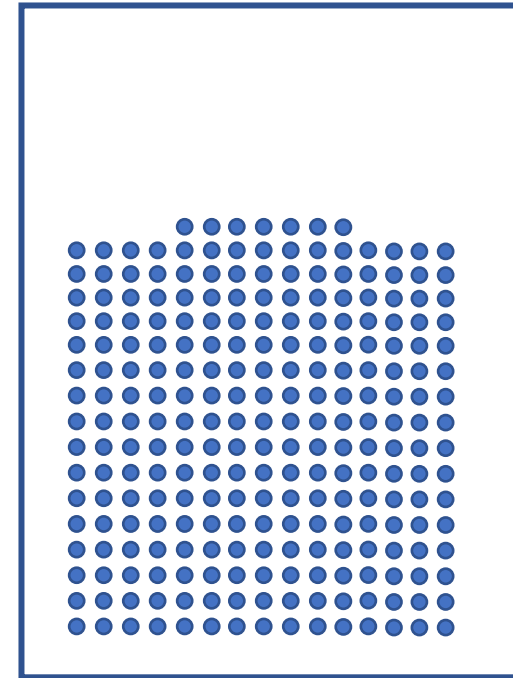
**900 SF MEETING ROOM**  
 CHAIRS =  $(900/15) = 60$   
 TABLES & CHAIRS =  $(900/26) = 34$

CODE MAX CHAIRS =  $(900/7) = 128$   
 CODE MAX TABLES & CHAIRS =  $(900/15) = 60$



**1,830 SF MEETING ROOM**  
 CHAIRS =  $(1830/15) = 122$   
 TABLES & CHAIRS =  $(1830/26) = 70$

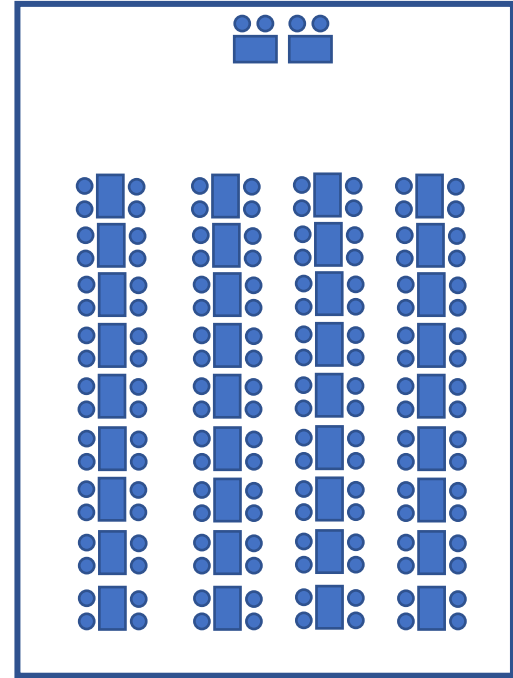
CODE MAX CHAIRS =  $(1830/7) = 261$   
 CODE MAX TABLES & CHAIRS =  $(1830/15) = 122$



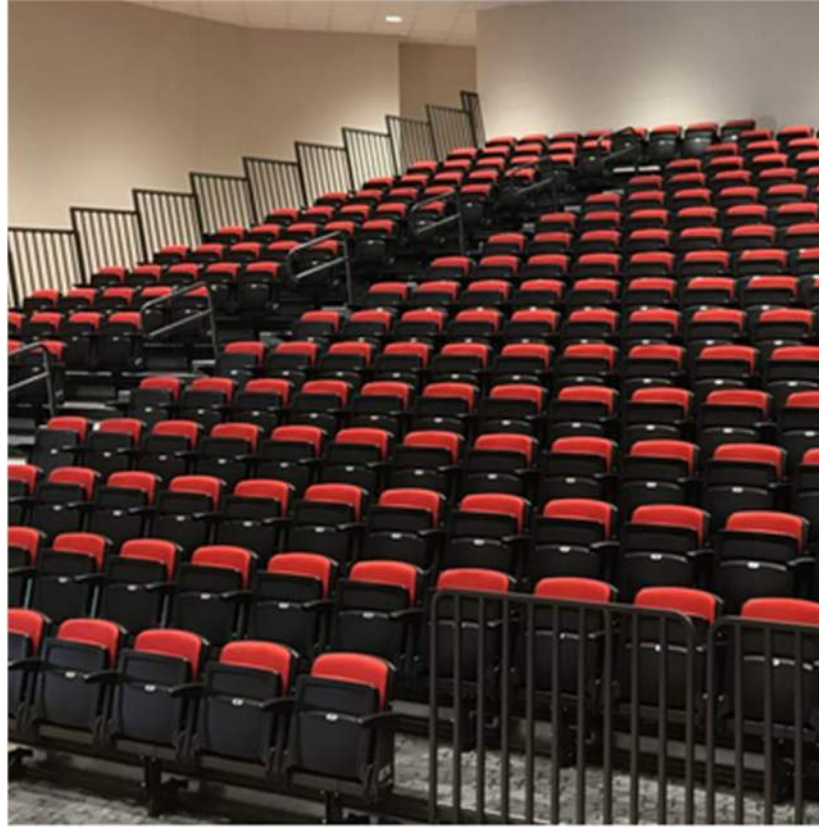
**3,710 SF MEETING ROOM**  
 CHAIRS =  $(3710/15) = 247$   
 TABLES & CHAIRS =  $(3710/26) = 142$

**OR**  
 TELESCOPING SEATS & CHAIRS =  $(2000/15) + (200TS) = 333$

CODE MAX CHAIRS =  $(3710/7) = 530$   
 CODE MAX TABLES & CHAIRS =  $(3710/15) = 247$







## Telescoping Seating Install Samples

- Lit Central Aisle
- Upholstered Seats
- Front Rails
- Seat Numbers

# Stage Options

## Hydraulic Air Lift Stage



- Retracts into the floor for max space when not in use
- Motorized for easy setup
- No extra storage is required for a stage
- ADA accessible

## Wall Recessed Stage



- Retracts into the wall for max space when not in use
- Motorized or Manual for easy setup
- No extra storage is required for a stage but separate platform stairs are required and stored separately
- ADA accessibility is achieved by attaching a mobile ramp – which would need to be stored.

## Platform Stage



- Is flexible and can be set up and configured in a variety of ways
- Storable when not in use in designated storage area
- Most cost-effective



# COMMUNITY

# THOUGHT STARTERS

1

What new opportunities do you see for programming that the existing space can't support?

2

How can the library better serve as a community resource?

3

Which option best supports the needs of the library and local community? Please explain.

4

Do you see value in prioritizing higher cost items over other potential library features? Please explain.

MAIN LIBRARY/  
TRADITIONAL MATERIALS





## TRADITIONAL MATERIALS

1

What new opportunities do you see for the adult offerings that the existing space can't support?

3

What concerns do you have for the proposed plan and utilization of space?

## THOUGHT STARTERS

2

In 10 - 20 years how do you envision young adults, adults, and seniors making use of the library?

4

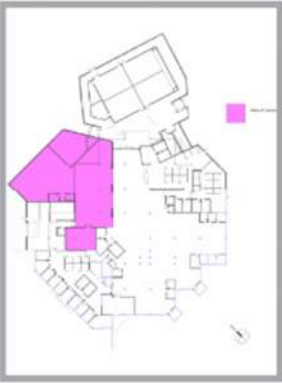
What does modernizing the library mean to you?

CHILDREN & YOUTH  
LIBRARY





# Children & Youth Areas



Square Foot Comparison for:  
Children & Youth: 4,700 sf to 8,100 sf



# CHILDREN & YOUTH

# THOUGHT STARTERS

1

What new opportunities do you see for the children & youth offerings that the existing space can't support? How could the library use the crafting and multi-use rooms to expand its programming?

2

In 10 - 20 years how do you envision children and teens utilizing the library?

3

What concerns do you have for the proposed plan and utilization of space?

4

How can the library provide better resources to families with children of all ages?

# Next Steps

## Community Survey

Open until 8/4



# COMMUNITY OPEN HOUSE!

*Thank you for your participation.*

